

P Series

P 시리즈
P 系列

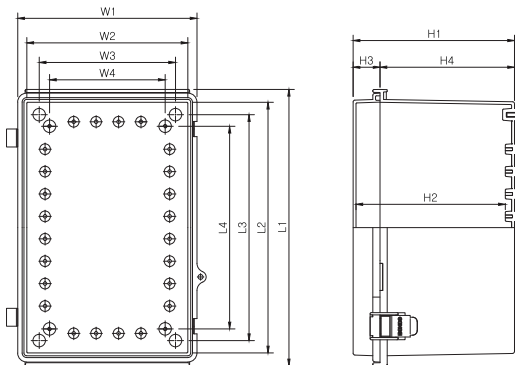
90x120x70 ~ 630x830x285mm

FEATURE | 특성 | 特征

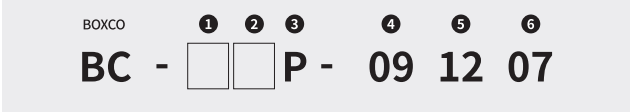
- SUS hinge pin, SUS latch and insert
- It is easy to removable cover and base
- 스텐레스 힌지핀, 스텐레스 래치 타입, 인서트 있는 제품
- 커버, 베이스 탈부착 용이
- SUS铰链柱, 采用SUS锁扣 螺母的产品
- 容易分开盒体和盒盖

SPECIFICATION | 사양 | 产品规格说明

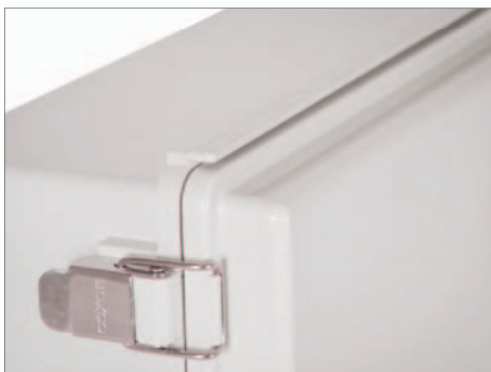
- IP Rating / 방수, 방진 보호등급 / 防尘防水等级 | IP66/67
- IK Rating / 충격 테스트 / 冲击测试 | IK08
- Temperature Range / 온도영역 / 温度范围 | ABS : - 40 ~ + 70, PC : - 40 ~ + 110
- Flammability Rating / 난연성 / 阻燃等级 | ABS : 94-HB, PC : 94-V-0, 5VA, HB
- Certification / 인증 / 认证 | TUV, CE, UL (See page 6 / 6 페이지 참조 / 请参照第6页)



P SERIES model name | P 시리즈 모델선정방법 | P 系列 产品型号命名方法



- ① Material / 재료 / 材质 - A : ABS C : PC
- ② Cover / 커버색상 / 箱盖颜色 - G : Grey / 회색 / 灰色 T : Transparent / 투명 / 透明
- ③ Type / 타입 / 类型 - SUS Latch / SUS 래치 / SUS锁扣
- ④ Width / 가로 / 宽度(W)
- ⑤ Length / 세로 / 长度(L) - Hinge, Latch Installed / 힌지, 래치부착면 / 铰链, 锁扣安装面
- ⑥ Height / 높이 / 高度(H) - Cover Included / 커버포함 / 含箱盖



Product model / 제품모델 / 产品型号							Mounting plate / 속판모델 / 底板型号			
Model 모델 / 型号	Outside dimension 외부 치수 / 外部尺寸			Cover (H3)	Base (H4)	Inside dimension 내부 치수 / 内部尺寸	Plastic 플라스틱 / 塑料			Steel 철 / 金属
	Size (W1xL1xH1/mm)	Size (W1xL1xH1/inch)					G-type	PG-type	P-type	
BC-□□P-091207	90 x 120 x 70	3.54 x 4.72 x 2.76	20	50	66 x 97 x 57	-	-	0811 P	0811 S	
BC-□□P-091208	90 x 120 x 85	3.54 x 4.72 x 3.35	20	65	66 x 97 x 72	-	-	0811 P	0811 S	
BC-□□P-101507	100 x 150 x 70	3.94 x 5.91 x 2.76	20	50	77 x 127 x 57	-	-	0813 P	0813 S	
BC-□□P-101508	100 x 150 x 85	3.94 x 5.91 x 3.35	20	65	76 x 126 x 72	-	-	0813 P	0813 S	
BC-□□P-112107	110 x 210 x 75	4.33 x 8.27 x 2.95	20	55	86 x 186 x 62	-	-	1020 P	1020 S	
BC-□□P-112110	110 x 210 x 100	4.33 x 8.27 x 3.94	20	80	86 x 186 x 87	-	-	1020 P	1020 S	
BC-□□P-112607	110 x 260 x 75	4.33 x 10.24 x 2.95	20	55	86 x 236 x 62	-	-	1126 P	1126 S	
BC-□□P-112610	110 x 260 x 100	4.33 x 10.24 x 3.94	20	80	86 x 236 x 87	-	-	1126 P	1126 S	
BC-□□P-131508	135 x 155 x 85	5.12 x 5.91 x 3.35	20	65	110 x 131 x 72	-	-	1315 P	1315 S	
BC-□□P-131808	135 x 185 x 85	5.12 x 7.09 x 3.35	20	65	111 x 161 x 72	1217 G	-	1217 P	1217 S	
BC-□□P-131810	135 x 185 x 100	5.12 x 7.09 x 3.94	20	80	111 x 161 x 87	1217 G	-	1217 P	1217 S	
BC-□□P-151509	150 x 150 x 90	5.91 x 5.91 x 3.54	20	70	126 x 126 x 76	1515 G	-	1515 P	1515 S	
BC-□□P-151512	150 x 150 x 120	5.91 x 5.91 x 4.72	20	100	126 x 126 x 106	1515 G	-	1515 P	1515 S	
BC-□□P-162110	160 x 210 x 100	6.30 x 8.27 x 3.94	25	75	136 x 186 x 87	1520 G	-	1520 P	1520 S	
BC-□□P-162113	160 x 210 x 130	6.30 x 8.27 x 5.12	25	105	135 x 185 x 117	1520 G	-	1520 P	1520 S	
BC-□□P-162610	160 x 260 x 100	6.30 x 10.24 x 3.94	25	75	136 x 236 x 87	1525 G	-	1525 P	1525 S	
BC-□□P-162613	160 x 260 x 130	6.30 x 10.24 x 5.12	25	105	135 x 235 x 117	1525 G	-	1525 P	1525 S	
NEW BC-□□P-172210	170 x 220 x 105	6.69 x 8.66 x 4.13	25	80	146 x 196 x 91	1520 G	-	1520 P	1520 S	
BC-□□P-172711	170 x 270 x 110	6.69 x 10.63 x 4.33	30	80	146 x 246 x 96	1525 G	-	1525 P	1525 S	
BC-□□P-212110	210 x 210 x 100	8.27 x 8.27 x 3.94	25	75	185 x 185 x 87	2020 G	-	2020 P	2020 S	
BC-□□P-212113	210 x 210 x 130	8.27 x 8.27 x 5.12	25	105	185 x 185 x 117	2020 G	-	2020 P	2020 S	
BC-□□P-192810	190 x 280 x 100	7.48 x 11.02 x 3.94	30	70	165 x 255 x 84	-	1928 PG	1928 P	1928 S	
BC-□□P-192814	190 x 280 x 140	7.48 x 11.02 x 5.51	30	110	165 x 255 x 124	-	1928 PG	1928 P	1928 S	
BC-□□P-203013	200 x 300 x 130	7.87 x 11.81 x 5.12	30	100	175 x 275 x 114	-	-	2030 P	2030 S	
BC-□□P-203015	200 x 300 x 150	7.87 x 11.81 x 5.91	30	120	174 x 274 x 134	-	-	2030 P	2030 S	
BC-□□P-203018	200 x 300 x 180	7.87 x 11.81 x 7.09	30	150	173 x 273 x 164	-	-	2030 P	2030 S	
BC-□□P-253515	250 x 350 x 150	9.84 x 13.78 x 5.91	30	120	224 x 324 x 134	-	-	2535 P	2535 S	
BC-□□P-253518	250 x 350 x 180	9.84 x 13.78 x 7.09	30	150	223 x 323 x 164	-	-	2535 P	2535 S	
BC-□□P-282813	280 x 280 x 130	11.02 x 11.02 x 5.12	30	100	255 x 255 x 114	-	-	2828 P	2828 S	
BC-□□P-283813	280 x 380 x 130	11.02 x 14.96 x 5.12	30	100	255 x 355 x 114	-	2838 PG	2838 P	2838 S	
BC-□□P-303015	300 x 300 x 150	11.81 x 11.81 x 5.91	30	120	274 x 274 x 134	-	-	3030 P	3030 S	
BC-□□P-303018	300 x 300 x 180	11.81 x 11.81 x 7.09	30	150	273 x 273 x 164	-	-	3030 P	3030 S	
BC-□□P-304012	300 x 400 x 120	11.81 x 15.75 x 4.72	30	90	275 x 375 x 104	-	-	3040 P	3040 S	
BC-□□P-304015	300 x 400 x 150	11.81 x 15.75 x 5.91	30	120	274 x 374 x 134	-	-	3040 P	3040 S	
BC-□□P-304018	300 x 400 x 180	11.81 x 15.75 x 7.09	30	150	273 x 373 x 164	-	-	3040 P	3040 S	
BC-□□P-353515	350 x 350 x 150	13.78 x 13.78 x 5.91	30	120	324 x 324 x 134	-	-	3535 P	3535 S	
BC-□□P-353518	350 x 350 x 180	13.78 x 13.78 x 7.09	30	150	323 x 323 x 164	-	-	3535 P	3535 S	
BC-□□P-354512	350 x 450 x 120	13.78 x 17.72 x 4.72	30	90	318 x 418 x 103	-	-	3545 P	3545 S	
BC-□□P-354516	350 x 450 x 160	13.78 x 17.72 x 6.30	30	130	317 x 417 x 143	-	-	3545 P	3545 S	
BC-□□P-354520	350 x 450 x 200	13.78 x 17.72 x 7.87	30	170	316 x 416 x 183	-	-	3545 P	3545 S	
BC-□□P-405016	400 x 500 x 160	15.75 x 19.69 x 6.30	30	130	363 x 469 x 144	-	-	4050 P	4050 S	
BC-□□P-405020	400 x 500 x 200	15.75 x 19.69 x 7.87	30	170	361 x 468 x 184	-	-	4050 P	4050 S	
BC-□□P-406018	400 x 600 x 180	15.75 x 23.62 x 7.09	30	150	360 x 567 x 163	-	-	4060 P	4060 S	
BC-□□P-406023	400 x 600 x 230	15.75 x 23.62 x 9.06	30	200	360 x 568 x 213	-	-	4060 P	4060 S	
BC-□□P-506018	530 x 630 x 185	20.87 x 24.80 x 7.28	35	150	478 x 585 x 166	-	-	5060 P	5060 S	
BC-□□P-506025	530 x 630 x 255	20.87 x 24.80 x 10.04	35	220	476 x 576 x 236	-	-	5060 P	5060 S	
BC-□□P-507018	530 x 730 x 185	20.87 x 28.74 x 7.28	35	150	478 x 680 x 166	-	-	5070 P	5070 S	
BC-□□P-507025	530 x 730 x 255	20.87 x 28.74 x 10.04	35	220	476 x 676 x 236	-	-	5070 P	5070 S	
BC-□□P-608018	630 x 830x 185	24.80 x 32.68 x 7.28	35	150	578 x 778 x 166	-	-	-	6080 S	
BC-□□P-608028	630 x 830 x 285	24.80 x 32.68 x 11.22	35	250	574 x 774 x 266	-	-	-	6080 S	

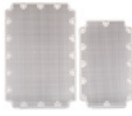
※ The following products have bosses inside the cover.

하기 제품은 커버 내부에 보스가 있습니다.

以下产品在盖子内有安装螺柱。

BC-□□P-172211	170 x 220 x 110	6.69 x 8.66 x 4.33	30	80	146 x 196 x 96	1520 G	-	1520 P	1520 S
---------------	-----------------	--------------------	----	----	----------------	--------	---	--------	--------

ACCESSORIES | 액세서리 | 配件



[Plastic mounting plate(G, PG Plate)]



[Plastic mounting plate(P Plate)]



[Steel mounting plate(S Plate)]



[Key ring(K40)]



[Lock(SK)]



[Plastic lock(PK)]



[Integral lock(PSK15, PPK20, PPK35, PPK50)]



[SUS bracket(B40, B50, B60)]

B40 : P-091207~P-212113 (Screw : TTS 4x10)
 B50 : P-192810~P-406023 (Screw : TH M5x10)
 B60 : P-406018~P-608028
 (Screw : TH M5x10, TH M6x10)



[Plastic bracket(PB40, PB50)]

PB40 : P-091207~P-212113 (Screw : TTS 4x12)
 PB50 : P-192810~P-507025 (Screw : TH M5x12)



[Vent(V60, V80)]

DUAL DOOR | 이중도어 | 双层门

※ See page 61 of photo, description / 61 페이지 사진, 설명 참조 / 请查看61页图片和说明

Dual door applicable model / 이중도어 적용가능 제품 / 适用产品		
Model 이중도어 사용 가능 제품 / 型号	Outside dimension 외부 치수 / 外部尺寸	
	Size (W1xL1xH1/mm)	Size (W1xL1xH1/inch)
BC- □□P- 203013	200 x 300 x 130	7.87 x 11.81 x 5.12
BC- □□P- 203015	200 x 300 x 150	7.87 x 11.81 x 5.91
BC- □□P- 203018	200 x 300 x 180	7.87 x 11.81 x 7.09
BC- □□P- 253515	250 x 350 x 150	9.84 x 13.78 x 5.91
BC- □□P- 253518	250 x 350 x 180	9.84 x 13.78 x 7.09
BC- □□P- 282813	280 x 280 x 130	11.02 x 11.02 x 5.12
BC- □□P- 283813	280 x 380 x 130	11.02 x 14.96 x 5.12
BC- □□P- 303015	300 x 300 x 150	11.81 x 11.81 x 5.91
BC- □□P- 303018	300 x 300 x 180	11.81 x 11.81 x 7.09
BC- □□P- 304015	300 x 400 x 150	11.81 x 15.75 x 5.91
BC- □□P- 304018	300 x 400 x 180	11.81 x 15.75 x 7.09
BC- □□P- 354516	350 x 450 x 160	13.78 x 17.72 x 6.30
BC- □□P- 354520	350 x 450 x 200	13.78 x 17.72 x 7.87
BC- □□P- 405016	400 x 500 x 160	15.75 x 19.69 x 6.30
BC- □□P- 405020	400 x 500 x 200	15.75 x 19.69 x 7.87
BC- □□P- 406018	400 x 600 x 180	15.75 x 23.62 x 7.09
BC- □□P- 406023	400 x 600 x 230	15.75 x 23.62 x 9.06
BC- □□P- 506018	530 x 630 x 185	20.87 x 24.80 x 7.28
BC- □□P- 506025	530 x 630 x 255	20.87 x 24.80 x 10.04

Product model / 제품모델 / 产品型号		
Dual door 이중도어 / 双层门系列	Dual door aluminium plate 알루미늄 중판 / 铝板中门	Dual door set 이중도어 세트 / 层门用配件
BC- PF203013	BC- PFA2030	BC- PFA203013
BC- PF203015	BC- PFA2030	BC- PFA203015
BC- PF203018	BC- PFA2030	BC- PFA203018
BC- PF253515	BC- PFA2535	BC- PFA253515
BC- PF253518	BC- PFA2535	BC- PFA253518
BC- PF282813	BC- PFA2828	BC- PFA282813
BC- PF283813	BC- PFA2838	BC- PFA283813
BC- PF303015	BC- PFA3030	BC- PFA303015
BC- PF303018	BC- PFA3030	BC- PFA303018
BC- PF304015	BC- PFA3040	BC- PFA304015
BC- PF304018	BC- PFA3040	BC- PFA304018
BC- PF354516	BC- PFA3545	BC- PFA354516
BC- PF354520	BC- PFA3545	BC- PFA354520
BC- PF405016	BC- PFA4050	BC- PFA405016
BC- PF405020	BC- PFA4050	BC- PFA405020
BC- PF406018	BC- PFA4060	BC- PFA406018
BC- PF406023	BC- PFA4060	BC- PFA406023
BC- PF506018	BC- PFA5060	BC- PFA506018
BC- PF506025	BC- PFA5060	BC- PFA506025